

**INSTRUMENT APPROACH CHART**

**AERODROME ELEV 1241 ft**

HEIGHTS RELATED TO  
THR RWY 28 - ELEV 1221 ft

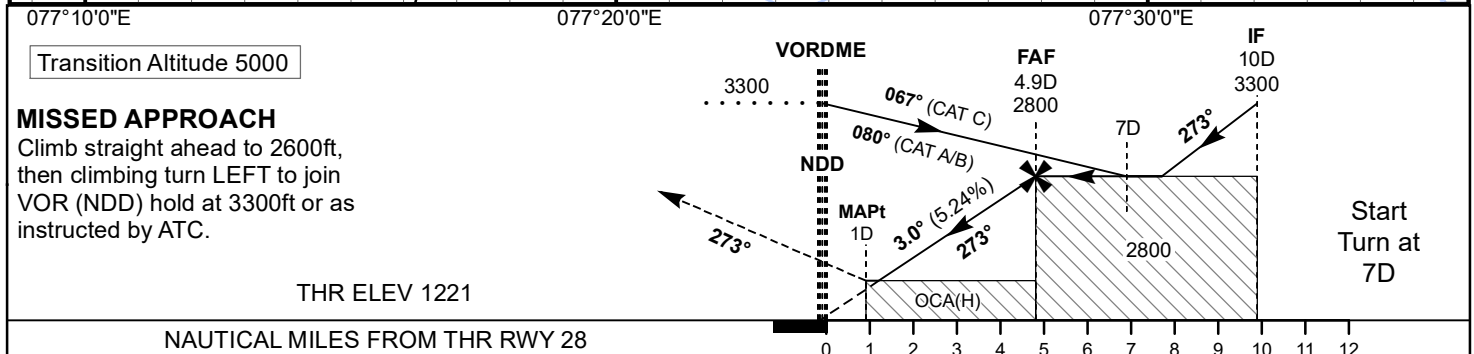
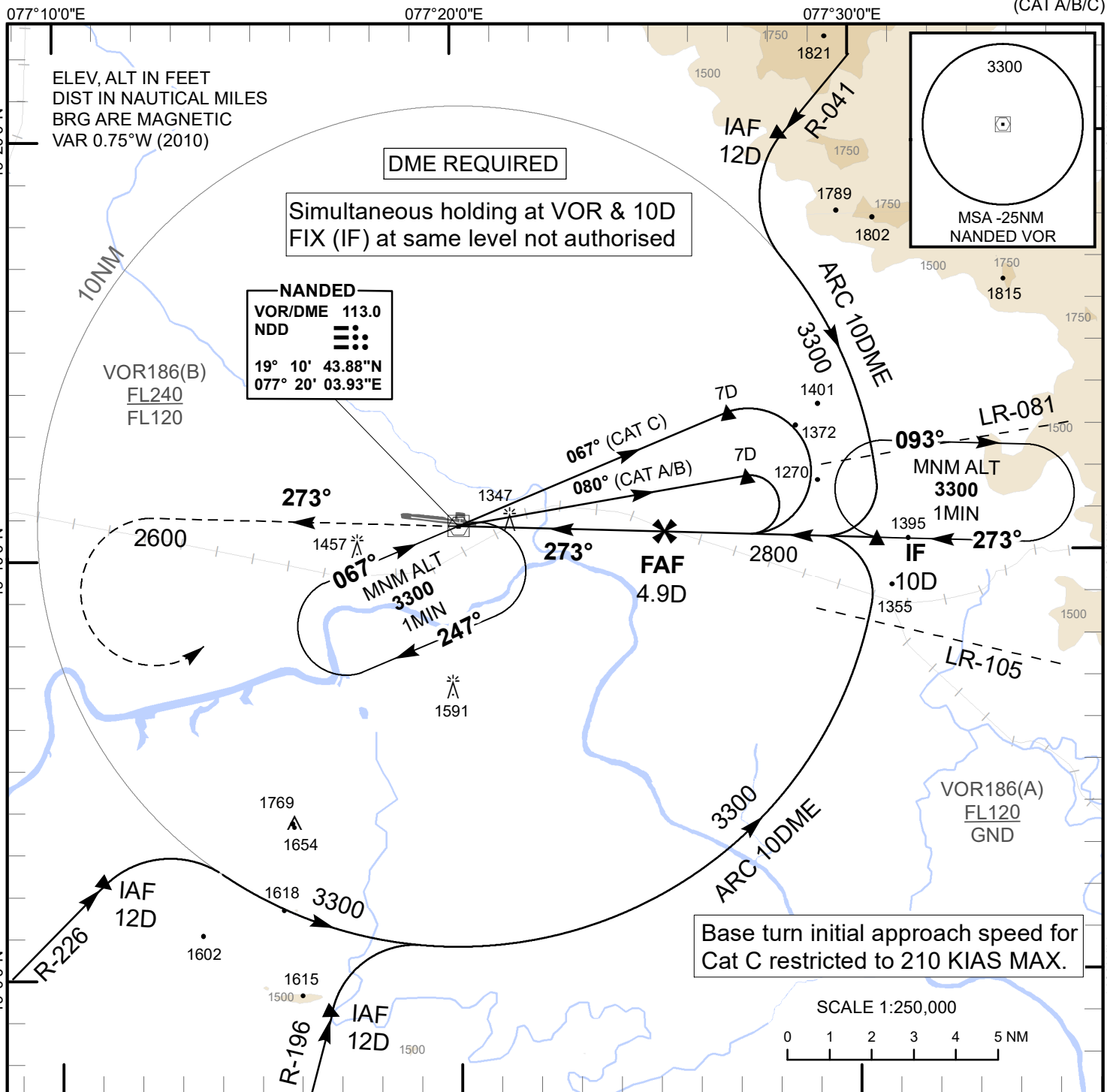
**TWR 118.750**

**NAANDED(VOND)**

INDIA

**VOR RWY 28**

(CAT A/B/C)



OCA(H)		Distance / Altitude Information							
Acft Category	A/B	C	Distance (NDD-DME)	NM	4.9D(FAF)	4D	3D	2D	
STRAIGHT - IN	1650(429)	1650(429)	Altitude	Ft	2800	2510	2200	1880	
CIRCLING	1880(639)	2000(759)	Ground speed / Rate of Descent Information						
			Ground speed	(Kt.)	80	100	120	140	160
			Rate of Descent (5.24%)	(Ft/Min)	425	530	635	745	850